

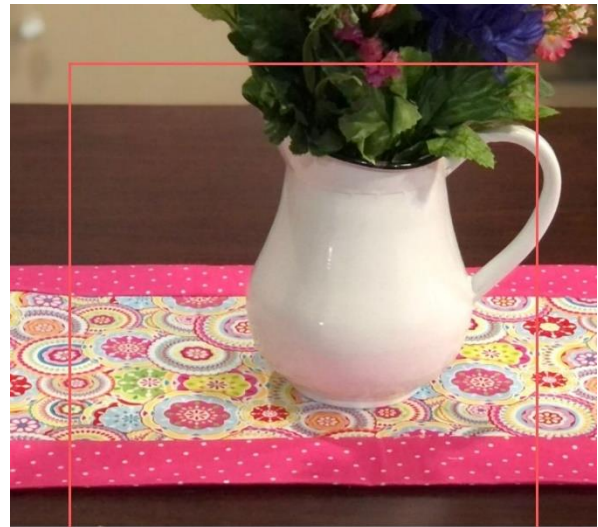
10 Minute Table Runner Pattern Printable PDF

If you are looking for an easy table runner pattern, there is nothing easier than this 10 minute table runner pattern. With 2 fabrics and less than a yard of fabric for each, you can no doubt have a new table runner in just a few minutes.

You can also choose between using batting and interfacing for your table runner. In this project, we are using a medium-weight interfacing.

Supplies:

- 2 contrasting fabrics
- Medium Weight interfacing or batting
- Thread
- Rotary cutter
- Magnetic Seam Guide (keeps your seams straight)



10 Minute

TABLE RUNNER

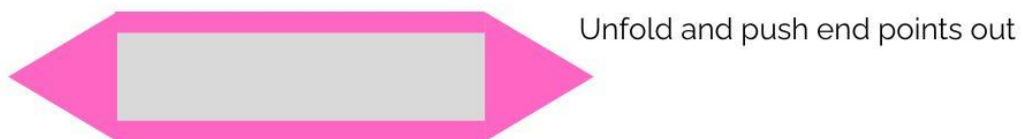
www.nanasewing.com

patternprincess.com

10 Minute Table Runner Diagram



Sew right sides together



patternprincess.com



Your Fabric Pieces

Cut your center piece 9" x 44" or longer if you have a large dining table. For your border you need a piece of fabric cut 18" x 44" or of course you can make it longer.

Next, cut a piece of interfacing or batting the same size as your center fabric piece and, following the instructions that came with your interfacing, attach it to your centerpiece. If using batting, we love using Quilt basting glue to hold it in place.



Prepping Fabric



Photos Courtesy of Nanasewing.com

Sew Right Sides Together

With right sides together, you want to sew one side of your center piece of fabric to one edge of your border using a 1/4" seam. You want to sew the long side of your 2 fabrics together.

After sewing that piece, press your seams toward the border (large piece of fabric).

Completed Table Runner



Sew Your 2nd Piece

Now you want to fold your long piece of fabric on top of the center (right sides together) and in or use sewing clips to hold in place. Along the long side, you will want to sew 1/4" seam allowance, making sure you back stitch as you start and finish.

When finished, you will want to take your pieces over to your iron. Press your seams flat.

Turn Inside Out

Next, you want to turn your pieces inside out and iron your pieces, making sure your border is the same size on both sides of your centerpiece of fabric.

If you have a sliding ruler that works well in checking your measurements. I find that ironing as I measure makes the process easy.

Make sure and cut off the selvage fabric and even out your edges on both sides. I love using my rotary cutter for precise cuts.

Create Your Points

Now, you want to turn your fabric over so that the back side is facing up. Fold your fabric in half. Use sewing clips or sewing pins to hold your pieces in place.

Sew 1/4" seam allowance on both edges. Trim just a little off your folded corner at the top where it is the thickest. Make sure and don't cut through your thread.

Now you want to open your point by turning your fabric edges inwards. You should see the center piece of fabric facing you and it should look like a triangle point with the seam up. Press your seam open. Flip your fabric at the point the other direction making sure to use something to press the point out like a chopstick.



Creating the Border and Points on the Ends



PATTERNPRINCESS.COM
PHOTOS COURTESY OF NANASEWING.COM

You will now only see your background fabric as your point. You can iron this down if it needs a little help lying flat. Don't forget to do both ends.

Finishing Your 10 Minute Table Runner Pattern

Now it's time to finish your table runner. You want to top stitch across the pointed end on both sides and down the middle of your seam on your pointed end.

Finally, you want to stitch in the ditch down the seam between your center piece of fabric and the border. If your machines do decorative stitches, or you have a quilting machine, you can also add that to the center or edges.

How you finish it is totally up to your personal tastes. It's all up to your imagination.

We hope you enjoyed this free tutorial courtesy of Nana Sewing. These are such a quick project, and you can easily create a table runner for any occasion and adjust the length depending on your table size.

XO

Vicky and Casey

